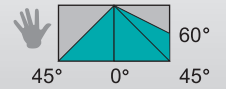
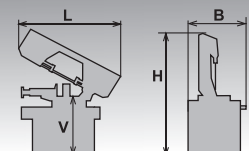
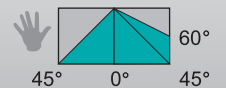


250x315 GH-LR



250x315 SHI-LR 250x315 SHI-LR-F



| mm | 0° | 45° | 60° | 45° | a x b |
|-------|---------|---------|---------|---------|---------|
| | 250 | 190 | 120 | 170 | X |
| | 150* | 110* | 80* | 110* | X |
| a x b | 290x200 | 190x140 | 120x140 | 200x70 | 200x120 |
| a x b | 290x200 | 180x200 | 120x140 | 110x200 | 200x120 |

| | | | mm | | kg |
|-----------------|-----------|---------|-------------|-----|--------|
| 3x400V 50 Hz | 0,75/1,1* | 37/74** | 2825x27x0,9 | | 380*** |
| L | B | Hmin | Hmax | V | |
| 1550 | 750 | 1420 | 1870 | 970 | |

*doporučené hodnoty/ recommended values

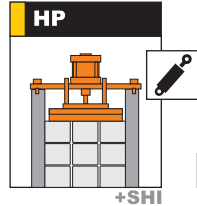
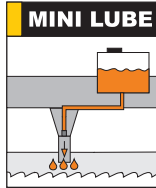
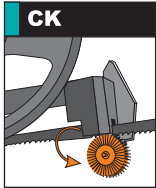
*F=2,2 kW, **20-100 m/min, ***SHI = 420 kg



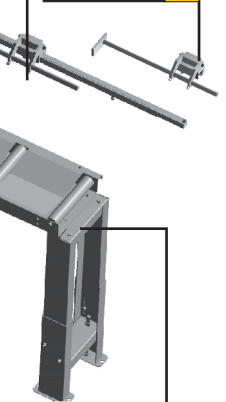
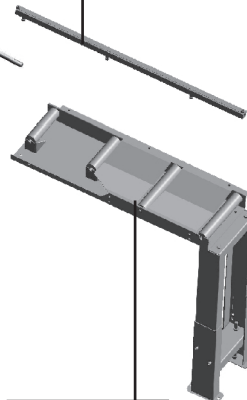
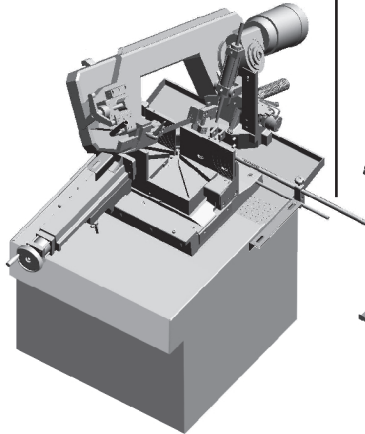
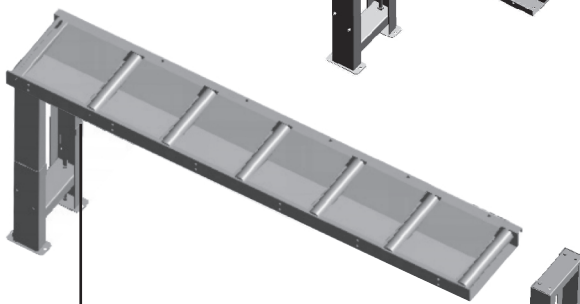
PEGAS

250x315 GH-LR

250x315 SHI-LR 250x315 SHI-LR-F



OPTION



■ STANDARD ■ OPTION



PEGAS-GONDA s.r.o., Čs. armády 322, 684 01 Slavkov u Brna
Tel: 00420-544 221 125, 00420-544 221 126, fax: 00420 544 227 389
E-mail: pegas@gonda.cz, www.pegas-gonda.cz, Czech Republic

- výrobce si vyhrazuje právo provádět změny technických údajů, technické údaje odpovídají 1.9.2011
/producer has the right to make changes of technical data, technical data are valid on 1.9.2011/
- pila na fotografii není vždy v základním provedení / the machine in the picture is not always in the basic version
- uvedené rozměry odpovídají stroji v základním provedení / mentioned diameters are for machine in basic version/